

FLETCHERS

ESTATE AGENTS



Emlyn Road, W12

£1,575,000

A semi detached four/five bedroom family house with lots of living space and in beautiful condition. There is a well designed self contained studio in the rear garden complete with en suite shower room.

Emlyn Road is off Stamford Brook Road within half a mile of Stamford Brook and Turnham Green tube stations. Easy access in and out of London via the A4 and M4.

• Four/Five Bedroom Family Home • Three Receptions • Beautifully Presented • Semi Detached • Self Contained Studio • Chain Free •

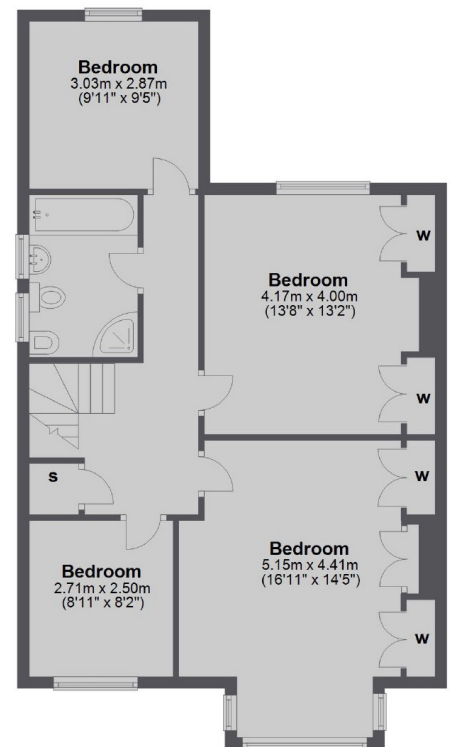
FLETCHERS

ESTATE AGENTS

Ground Floor



First Floor



Main area: Approx. 160.2 sq. metres (1724.5 sq. feet)
Plus annex, approx. 21.7 sq. metres (233.8 sq. feet)

Fletchers Chiswick Turnham Green
Sales
58 Turnham Green Terrace, London, W4
1QP
020 8987 3000

Energy Rating: E. We aim to make our particulars both accurate and reliable. However they are not guaranteed; nor do they form part of an offer or contract. If you require clarification on any points then please contact us, especially if you're traveling some distance to view. Please note that appliances and heating systems have not been tested and therefore no warranties can be given as to their good working order.