

Dunstable Office:

01582 477 077



HOUSEHOLD
estate agents

Residential Sales • Property Management • Lettings

74 Mulberry Close, Luton, Beds, LU1 1BX

£695 Per Month



74 Mulberry Close, Luton, Beds, LU1 1BX

IMMACULATE apartment offering RE-FITTED KITCHENETTE WITH APPLIANCES, TWO BEDROOM'S, RE-FITTED MODERN BATHROOM, DOUBLE GLAZING, COMMUNAL GARDENS and ALLOCATED PARKING. This property is AVAILABLE END MARCH on an UNFURNISHED BASIS.

*Mulberry Close is a development of modern apartments situated in a quiet cul-de-sac located within walking distance to Luton Town centre and all of it's amenities. Further benefits include double glazing, electric heating, allocated parking and communal gardens. To fully appreciate the fantastic benefits on offer we urge you to contact your local HOUSEHOLD LETTING AGENTS office without further delay to arrange an appointment to view. * tenants fees may apply further details available upon request from agent *

Entrance Hall

Bedroom 1

12'2" x 8'6" (3.72 x 2.58)

Bathroom

7'1" x 6'9" (2.16 x 2.05)

Bedroom 2

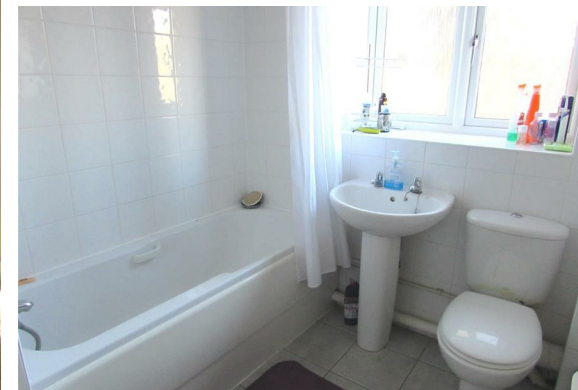
10'7" x 5'9" (3.23 x 1.75)

Lounge/Diner

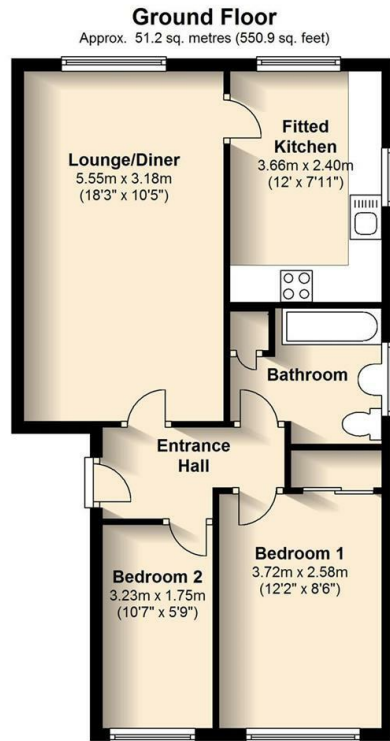
18'3" x 10'5" (5.55 x 3.18)

Fitted Kitchen

12'0" x 7'10" (3.66 x 2.40)



Floor Plan



Total area: approx. 51.2 sq. metres (550.9 sq. feet)

Viewing

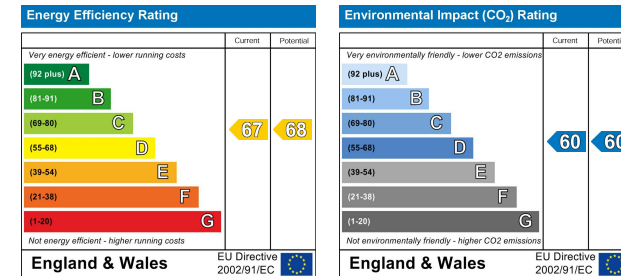
Please contact our Dunstable - Sales Office on 01582 477 077 if you wish to arrange a viewing appointment for this property or require further information.

address: 15b High Street North
Dunstable, Beds LU6 1HX
telephone: 01582 477 077
email: dunstable@house-hold.co.uk
website: www.house-hold.co.uk

Additional Offices: **Luton:** 17 Wellington Street
- 01582 487 487
Toddington: 2-4 High Street
- 01525 877 771

Area Map

EPC



FREE Property
showreels for
every home



The Property Experts with the Personal Touch

MISDESCRIPTIONS ACT: Household Estate Agents Ltd. For themselves and for the vendors of this property, whose agents they are, give notice that the particulars are set out as a general outline only for the guidance of intending purchasers and do not constitute or constitute part of any offer of contract, All descriptions, dimensions references to the condition and necessary permissions for use and occupation and other details are given without responsibility, and the intending purchasers should not rely upon them as statements or representations of fact but must satisfy themselves by inspection or otherwise as to their correctness. No person in the employment of Household Estate Agents Limited has any authority to give or make any representation or warranty whatsoever in relation to this property.