



Silverdale Gardens, Hillmorton

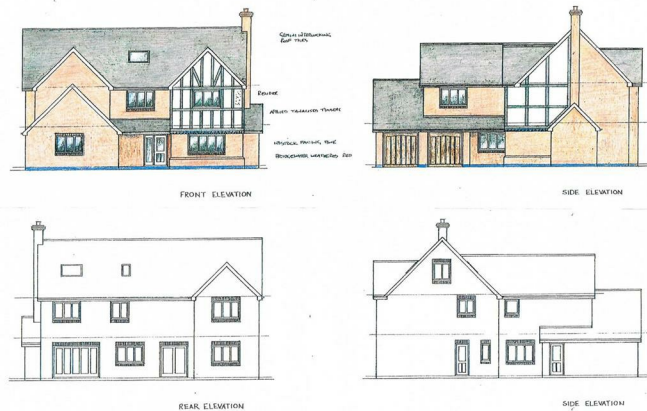
Guide Price £699,950

the **platinumcollection**...  
HOUSES OF DISTINCTION

## Silverdale Gardens, Hillmorton, Rugby

### Guide Price £699,950

The Platinum Collection- Brand new 6 bedroom detached family home built by Sylvester Estate's Ltd. There are 7 substantial detached homes constructed to a high standard approximately 1 mile from Rugby town centre. Plot 7 is currently under construction and interested parties can potentially have a say on finish ( STC ). 10 year NHBC, Double Garage, En Suite to two bedrooms, Study, Fully fitted kitchen / Breakfast Room with fully fitted appliances, Block paved driveway and established garden. Second floor with two additional bedrooms and bathroom or could be used as a gym/ teenager suite.







Energy Efficiency Rating		Current	Potential
Very energy efficient - lower running costs			
(92 plus) A			
(81-91) B			
(69-80) C			
(55-68) D			
(39-54) E			
(21-38) F			
(1-20) G			
Not energy efficient - higher running costs			
England & Wales		EU Directive 2002/91/EC	

Environmental Impact (CO <sub>2</sub> ) Rating		Current	Potential
Very environmentally friendly - lower CO <sub>2</sub> emissions			
(92 plus) A			
(81-91) B			
(69-80) C			
(55-68) D			
(39-54) E			
(21-38) F			
(1-20) G			
Not environmentally friendly - higher CO <sub>2</sub> emissions			
England & Wales		EU Directive 2002/91/EC	

Misrepresentation Act 1967 - These particulars are believed to be correct but their accuracy is not guaranteed nor do they form part of any contract.

**complete** **ESTATE AGENTS**

18 Church Street, Rugby, Warwickshire, CV21 3PU  
T: 01788 550 800  
sales@complete247.co.uk  
www.complete247.co.uk

the **platinumcollection**...  
HOUSES OF DISTINCTION