



## Park Street, SW6

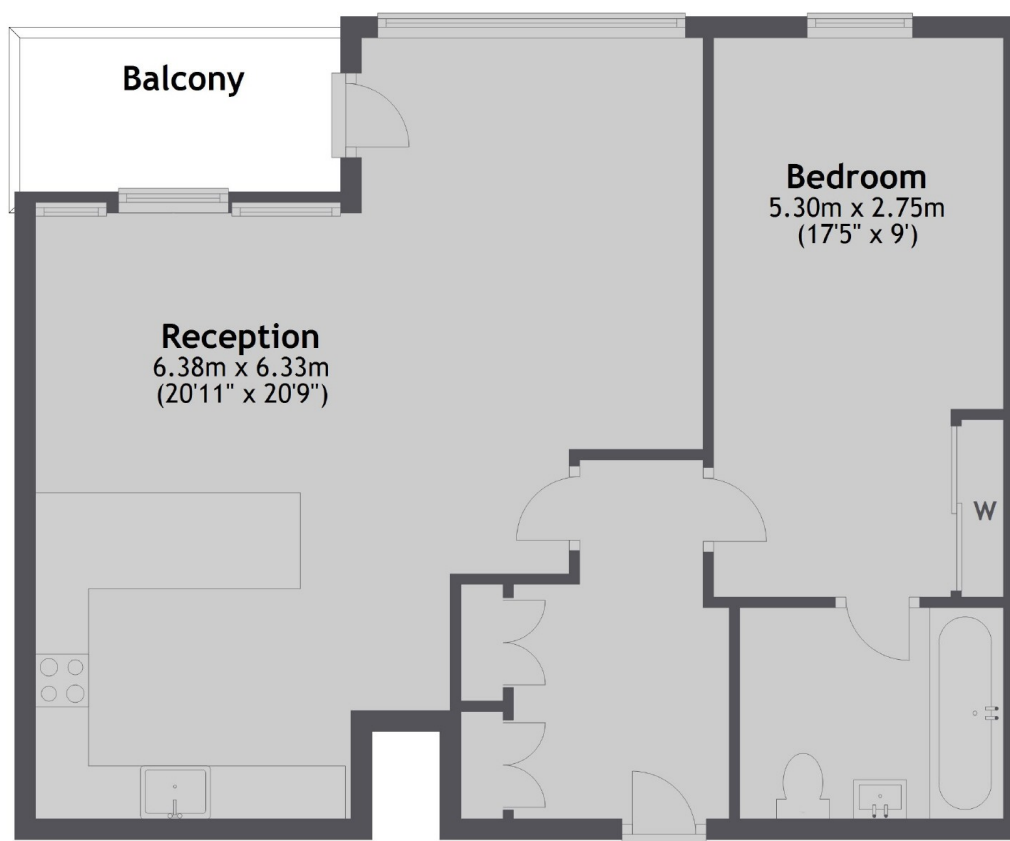
£595 pw (£2,578 pcm)

This spacious, neutrally decorated one bedroom modern third floor apartment in the sought-after Chelsea Creek development has a bright open-plan reception room, a large private balcony, residents spa with gym access, indoor swimming pool and a 24-hour concierge.

Chelsea Creek is a modern development off Imperial Road with Imperial Wharf station moments away. There are also great bus routes leading into the city and alternative transport modes such as the River taxi all available on your doorstep.

- One Bedroom • Open-Plan Reception • Modern Bathroom •
  - Private Balcony • Residents Spa • 24-Hour Concierge •
-

### Third Floor



Total area: approx. 62.1 sq. metres (668.4 sq. feet)

Chard Fulham Lettings  
5 Harwood Road,  
London, SW6 4QP  
020 7384 1400  
fulhamlettings@chard.co.uk

Energy Rating: B. We aim to make our particulars both accurate and reliable. However they are not guaranteed; nor do they form part of an offer or contract. If you require clarification on any points then please contact us, especially if you're traveling some distance to view. Please note that appliances and heating systems have not been tested and therefore no warranties can be given as to their good working order.