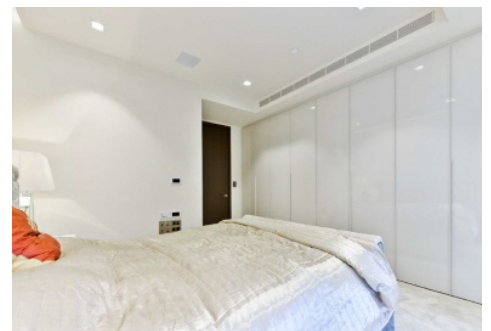




CITY  
DOCKLANDS  
SE.



## Earls Way, SE1

£800 pw (£3,033.33pcm)

Large two bedroom dual aspect apartment with large wrap around balcony. The apartment features underfloor heating, comfort cooling, scene setting lighting and automated blinds. Exceptional onsite amenities include 24-hour Harrods concierge, spa facilities with sauna, steam room and swimming pool, gymnasium and business lounge.

One Tower Bridge is one of the most sought after destinations in London. Overlooking Tower Bridge, next door is the London Mayor's office and in the immediate area you'll find a large number of restaurants including the The Ivy, Guacho and Tom Simmons.

- One Bedroom Apartment • One Tower Bridge • Highest Quality Apartment •
- Private Balcony • 24 Hour Concierge • On Site Spa and Gym Facilities •