



48 Tattershall
Swindon, SN5 8BX



48 Tattershall, Swindon, SN5 8BX

This **THREE BEDROOM, DETACHED** home provides good family accommodation with **AMPLE PARKING, SINGLE GARAGE** and driveway parking as well as a **MODERN FITTED KITCHEN**, beautiful bathroom and low maintenance garden. With good access to local amenities, schooling and transport links and access to A419/M4.

- Detached
- Three Bedrooms
- Sitting Room
- Dining Area
- Modern fitted Kitchen
- Beautiful Family Bathroom
- Two double and single bedrooms
- Drive way parking
- Low Maintenance garden
- Single Garage
- Side pedestrian access

£245,000



Description

This THREE BEDROOM, DETACHED home provides good family accommodation with AMPLE PARKING, SINGLE GARAGE and driveway parking as well as a MODERN FITTED KITCHEN, beautiful bathroom and low maintenance garden. With good access to local amenities, schooling and transport links and access to A419/M4.

Situation

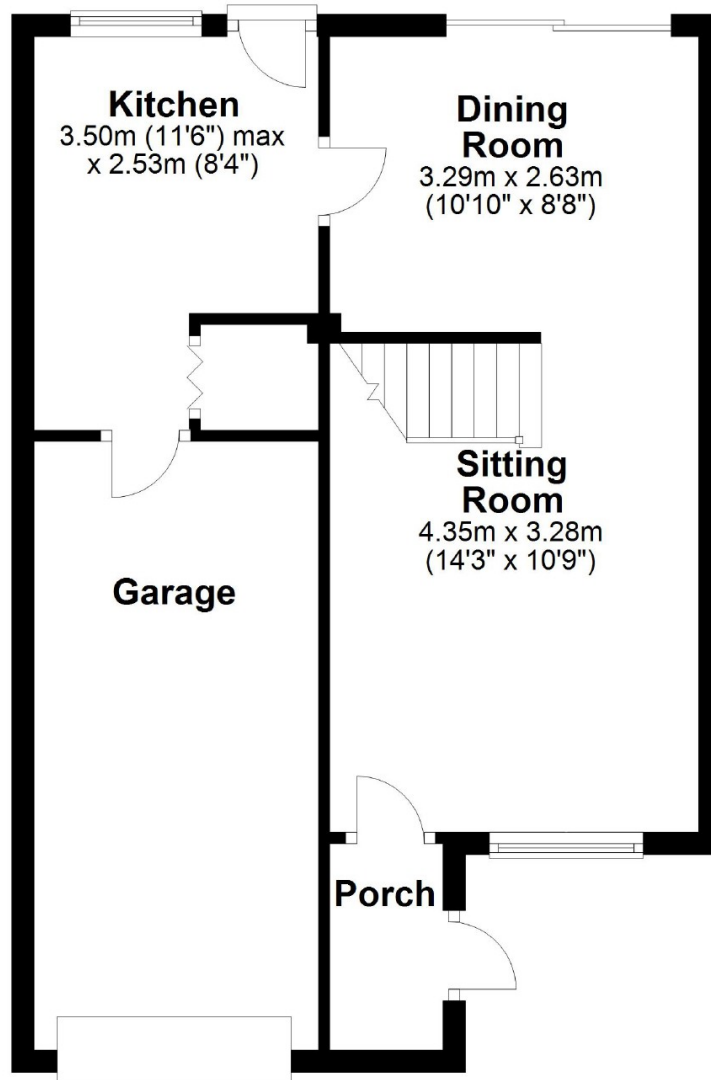
Toothill is a modern purpose built residential location, located on the Western side of Swindon with its own local amenities, schooling and good secondary school catchment area. There is good access to Junction 16 of the M4 c.2 miles and Swindon Town Centre c.4 miles with mainline railway links to London Paddington and Bristol.

Property Information

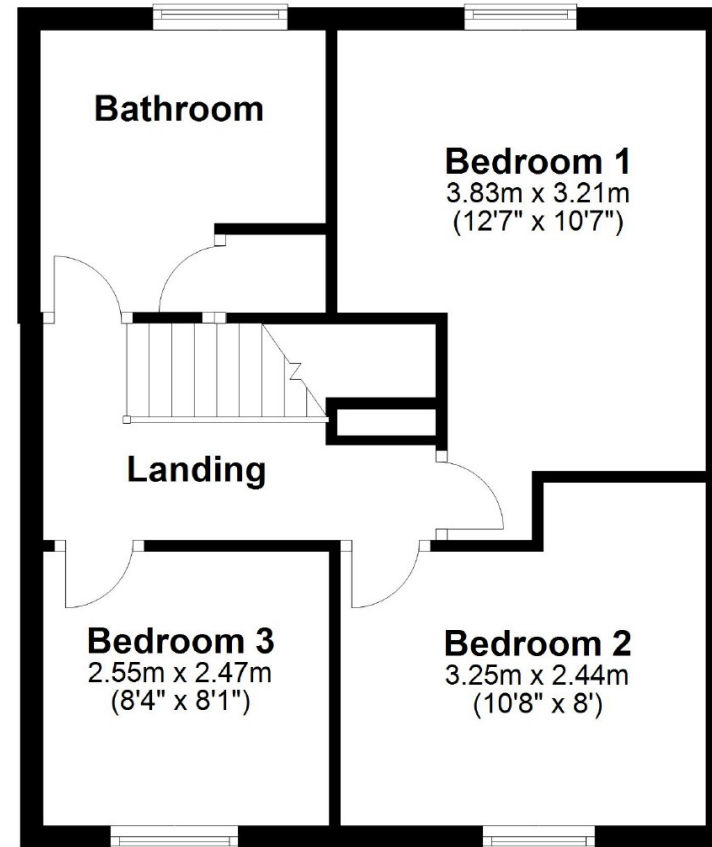
Tenure: Freehold
Gas Central Heating
Council Tax Band C



Ground Floor



First Floor



Unit B, Millgrove House, 59 Millgrove Street, Redhouse, Swindon,
Wiltshire, SN25 2FW
Tel: 01793 683144
Fax:

www.strakers.co.uk

■ Chippenham
■ Corsham

■ Marlborough
■ Malmesbury

■ Swindon
■ Devizes

■ Auction
■ Lettings