

ROKSTONE



Ennismore Gardens, Knightsbridge SW7

An immaculate four bedroom lateral apartment situated on the third floor, with lift access, of this grand south east corner building, directly overlooking the famous Ennismore Garden Square. The property has been refurbished to the highest specifications and benefits from grand proportions, high ceilings and period features. The accommodation is approximately 2730SqFt (253.62SqM) and comprises an elegant reception room, dining room with a south facing terrace, spacious bespoke kitchen/breakfast room, master bedroom suite with custom built walk in dressing room and marble bathroom, three further double bedrooms with en suite bathrooms, utility room, guest cloak room and two terraces with incomparable views to the south over the Brompton Oratory. The property further benefits from underfloor heating, air conditioning and an abundance of storage throughout.

Price £12,500,000

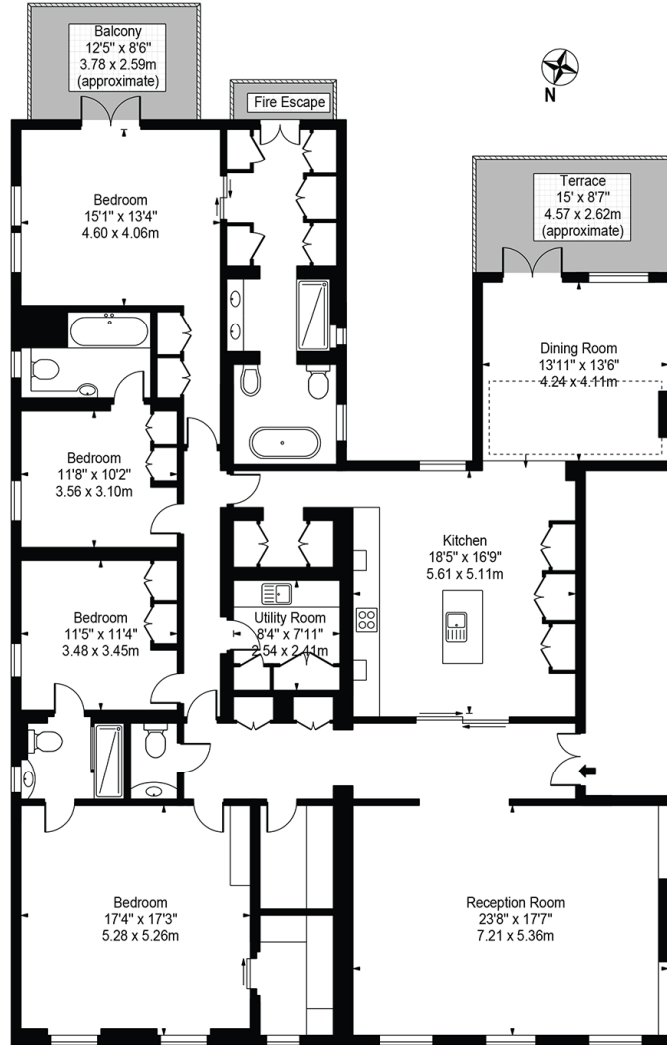


5 Dorset Street London W1U 6QJ
Tel: 020 7580 2030 | Email: enquiries@rokstone.com
www.rokstone.com

ROKSTONE

Ennismore Gardens

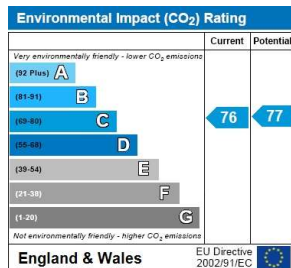
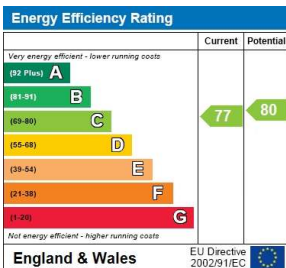
Approx. Gross Internal Area 2730 Sq Ft - 253.62 Sq M



Fourth Floor

For Illustration Purposes Only - Not To Scale

This floor plan should be used as a general outline for guidance only and does not constitute in whole or in part an offer or contract. Any intending purchaser or lessee should satisfy themselves by inspection, searches, enquiries and full survey as to the correctness of each statement. Any areas, measurements or distances quoted are approximate and should not be used to value a property or be the basis of any sale or let.



Terms

Local Authority: London Borough of Kensington and Chelsea
 Tenure: Leasehold
 Service Charge: £13,800PA
 Ground Rent: £500PA