



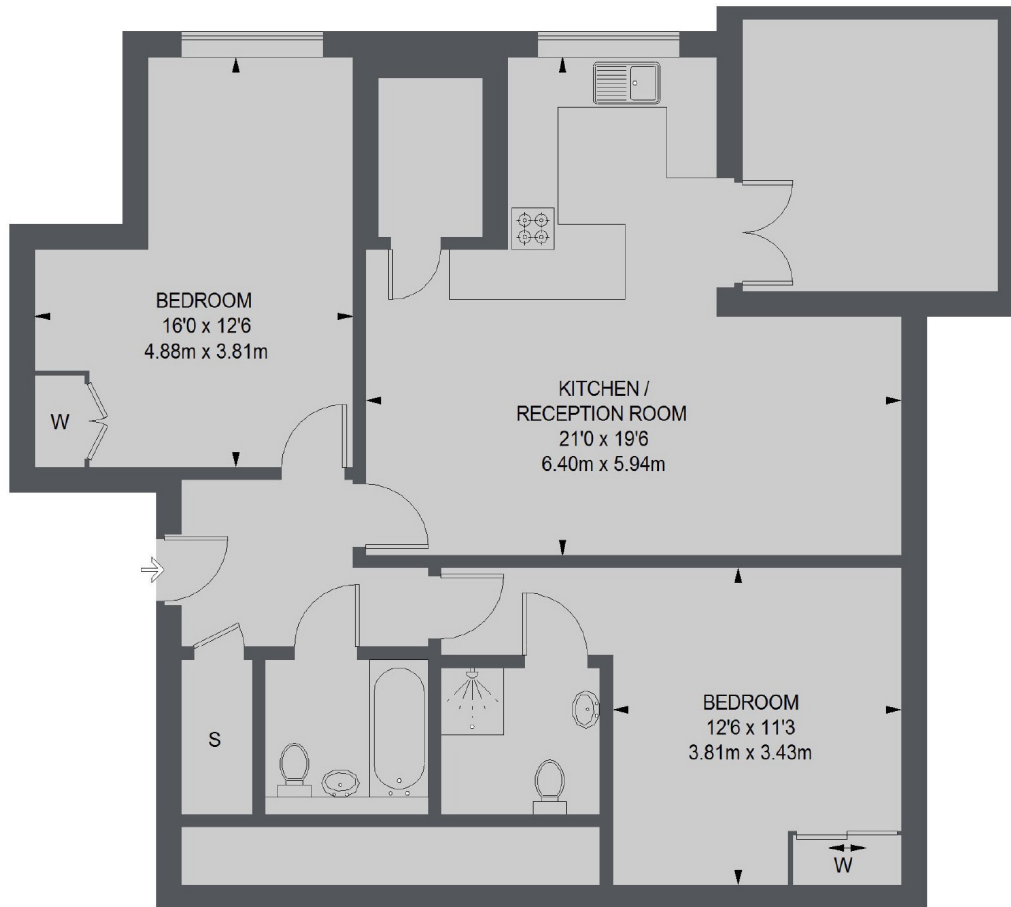
## Rainville Road, W6

£1,180 pw (£5,113 pcm)

This two bedroom penthouse apartment has a open plan living area with a fully fitted kitchen and doors leading to a private balcony with river views. The master bedroom has an ensuite all interior designed to a high spec.

Palace Wharf is the must have riverside residential address conveniently close to Hammersmith Station (District and Piccadilly lines). The redeveloped river front has a range of eateries and amazing views.

- Interior designed • Gated Development • Riverside Views •
- Good Transport Links • Private Balcony • Penthouse Apartment •



SECOND FLOOR

TOTAL APPROX. FLOOR AREA 841 SQ. FT. (78.13 SQ. M.)

Chard Fulham  
5 Harwood Road,  
London, SW6 4QP  
020 7384 1400  
fulhamlettings@chard.co.uk

Energy Rating: E. We aim to make our particulars both accurate and reliable. However they are not guaranteed; nor do they form part of an offer or contract. If you require clarification on any points then please contact us, especially if you're traveling some distance to view. Please note that appliances and heating systems have not been tested and therefore no warranties can be given as to their good working order.