

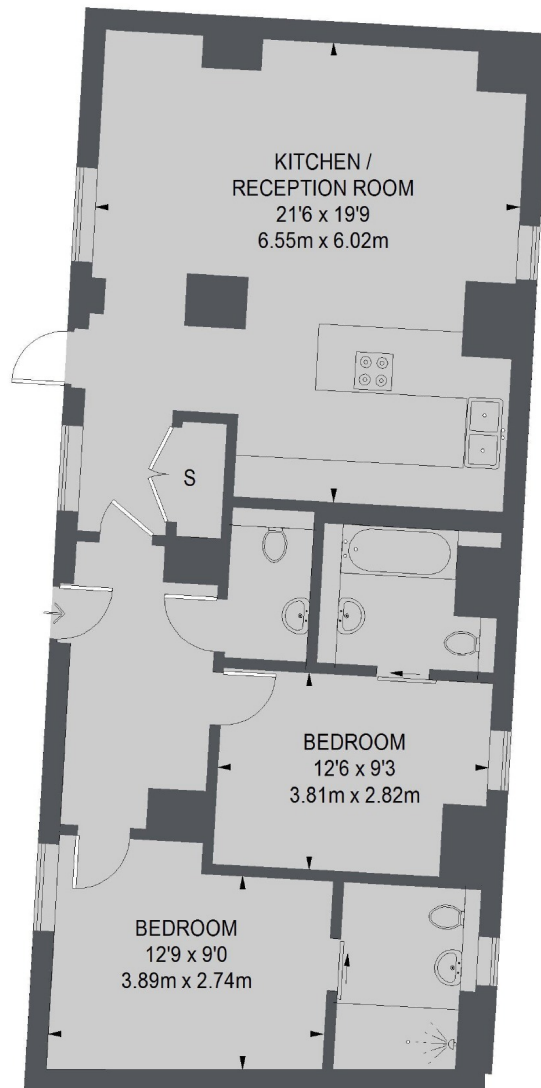
Rainville Road, W6

£1,105 pw (£4,788 pcm)

This two bedroom, two-bathroom riverside apartment has an open-plan reception with a fitted Metris Kitchen and a river facing private garden. This apartment is designed with a contemporary finish throughout.

Palace Wharf is the must have riverside residential address conveniently close to Hammersmith Station (District and Piccadilly lines). The redeveloped river front has a range of eateries and amazing views.

- Two Bedrooms • Two Bathrooms • Interior Designed •
- Gated Development • Riverside Views • Private Garden •

**GROUND FLOOR**

TOTAL APPROX. FLOOR AREA
901 SQ. FT. (83.70 SQ. M.)

Chard Fulham
5 Harwood Road,
London, SW6 4QP
020 7384 1400
fulhamlettings@chard.co.uk

Energy Rating: E. We aim to make our particulars both accurate and reliable. However they are not guaranteed; nor do they form part of an offer or contract. If you require clarification on any points then please contact us, especially if you're traveling some distance to view. Please note that appliances and heating systems have not been tested and therefore no warranties can be given as to their good working order.