

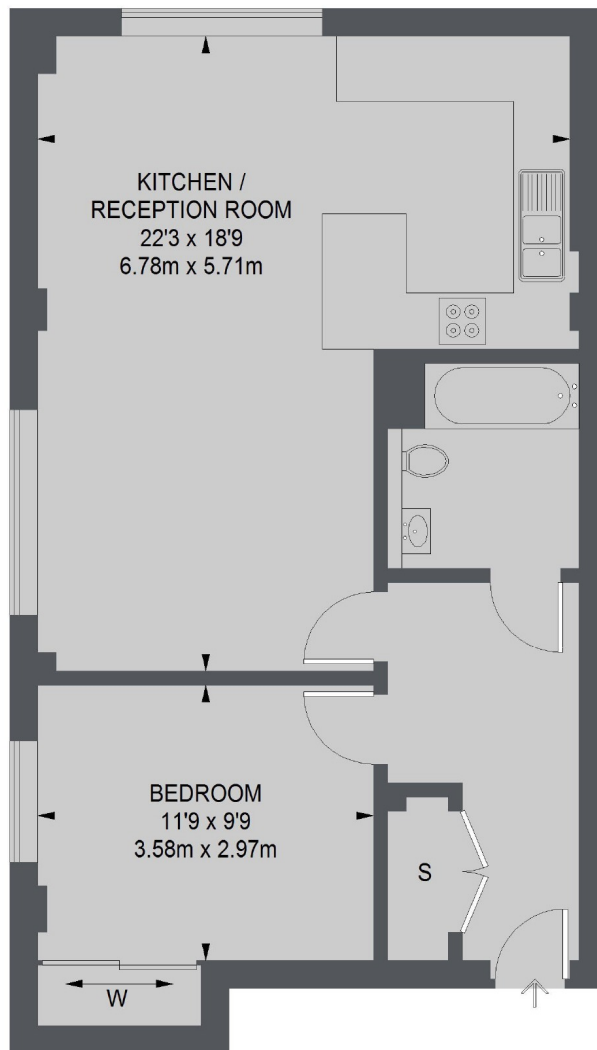
Rainville Road, W6

£725 pw (£3,141 pcm)

This one bedroom ground floor riverside apartment on Rainville Road has an open plan reception room with a fitted Metris Kitchen and ample space for dining. The bedroom has built in storage and a wall mounted TV and there is a contemporary bathroom with shower over the bath.

Palace Wharf is the must have riverside residential address conveniently close to Hammersmith with a selection of tube lines. The redeveloped river front has a range of eateries, uninterrupted views and is perfect for walks and runs.

- One Double Bedroom • Gated Development • Open-Plan •

**GROUND FLOOR**

TOTAL APPROX. FLOOR AREA 623 SQ. FT. (57.88 SQ. M.)

Chard Fulham
5 Harwood Road,
London, SW6 4QP
020 7384 1400
fulhamlettings@chard.co.uk

Energy Rating: D. We aim to make our particulars both accurate and reliable. However they are not guaranteed; nor do they form part of an offer or contract. If you require clarification on any points then please contact us, especially if you're traveling some distance to view. Please note that appliances and heating systems have not been tested and therefore no warranties can be given as to their good working order.