



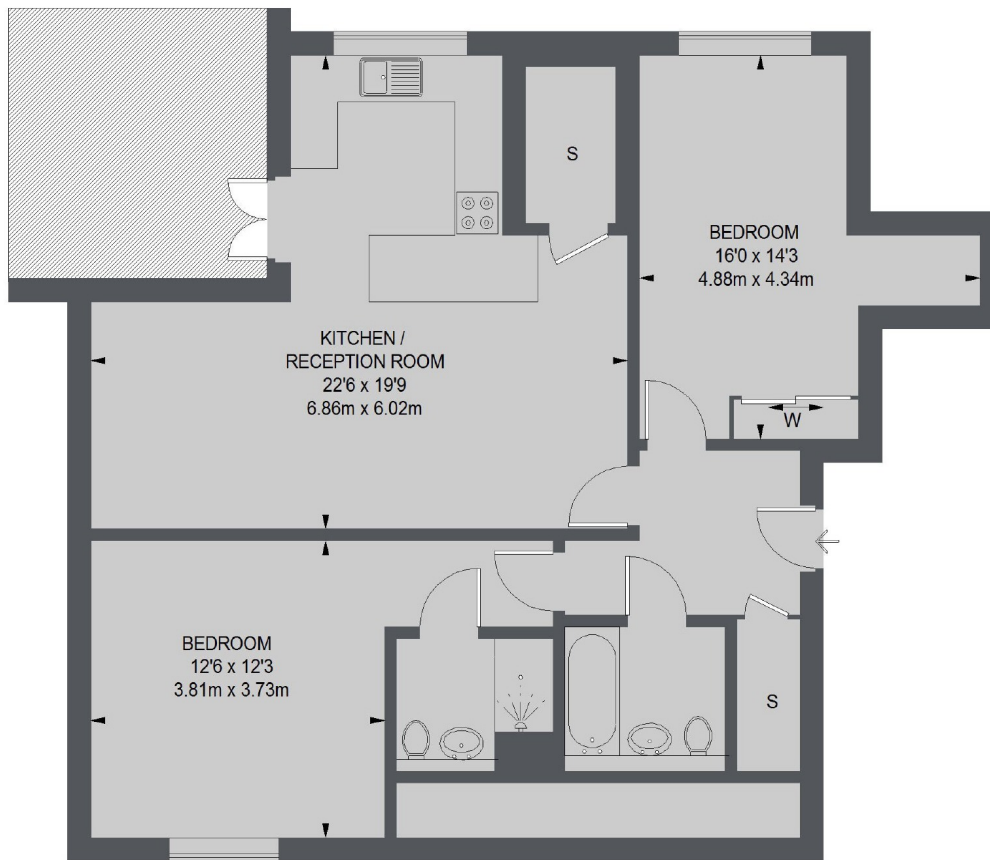
Rainville Road, W6

£1,193 pw (£5,169 pcm)

This two bedroom penthouse apartment has an open-plan living area with a fully fitted kitchen and a private balcony with river views, equipped with an en suite and modern design throughout.

Palace Wharf is a riverside residential property conveniently close by Hammersmith Station (District and Piccadilly line). The redeveloped river front has a range of eateries and amazing views.

- Two Bedrooms • Two Bathrooms • Riverside Views •
- Gated Development • Private Balcony • Penthouse Apartment •

**SECOND FLOOR**

TOTAL APPROX. FLOOR AREA
850 SQ. FT. (78.97 SQ. M.)

Chard Fulham
5 Harwood Road,
London, SW6 4QP
020 7384 1400
fulhamlettings@chard.co.uk

Energy Rating: E. We aim to make our particulars both accurate and reliable. However they are not guaranteed; nor do they form part of an offer or contract. If you require clarification on any points then please contact us, especially if you're traveling some distance to view. Please note that appliances and heating systems have not been tested and therefore no warranties can be given as to their good working order.