



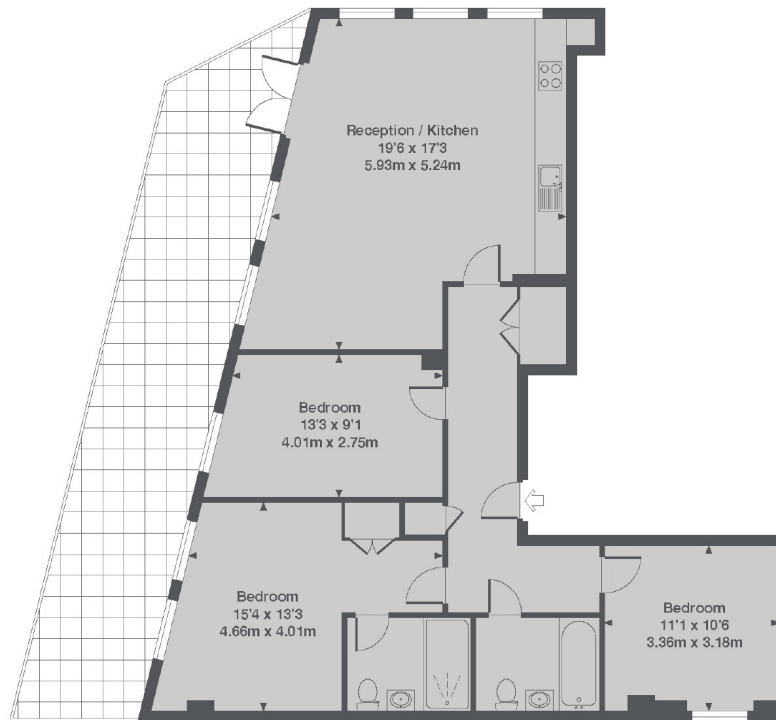
## Warple Way, W3

£501 pw (£2,171 pcm)

A three bedroom apartment with a large terrace overlooking the green open space of Acton Park.

Acton Central is 0.3 miles, Turnham Green is 0.9 miles and Acton Main Line (Crossrail) is approximately a mile away.

- Three Bedrooms • Two Bathrooms • Large Terrace •
- Overlooking Acton Park • Long Lease • No Onward Chain •



Newpark House, W3  
Total Approx. Floor area 1023 Sq. Ft. (95.0 Sq. M.)

Robertson Smith & Kempson Acton Lettings  
98 High Street, London, W3 6QX

020 8896 3967  
[actonlettings@robertsonsmithandkempson.co.uk](mailto:actonlettings@robertsonsmithandkempson.co.uk)

Energy Rating: C. We aim to make our particulars both accurate and reliable. However they are not guaranteed; nor do they form part of an offer or contract. If you require clarification on any points then please contact us, especially if you're traveling some distance to view. Please note that appliances and heating systems have not been tested and therefore no warranties can be given as to their good working order.