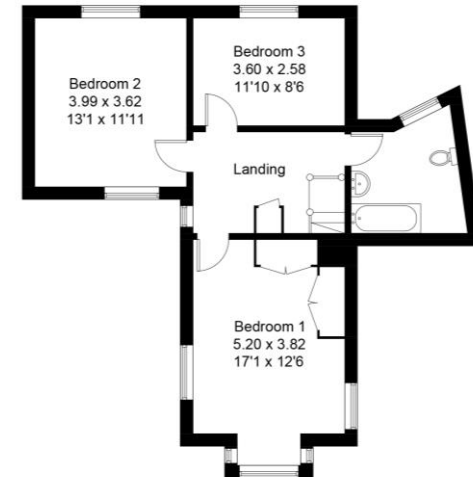
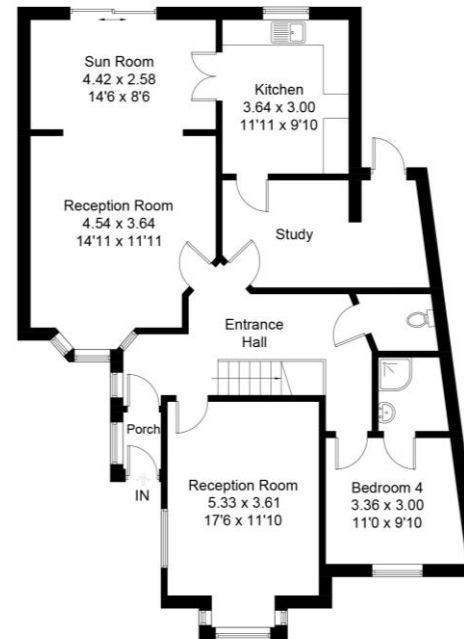






Briar Road

Approximate Gross Internal Area = 166.4 sq m / 1791 sq ft



Ground Floor

First Floor

Illustration for identification purposes only, measurements are approximate, not to scale. (ID457482)

Beresford Residential, Streatham's leading independent estate agent, are delighted to offer this spectacular four double bedroom semi detached house presented in excellent condition throughout. This spacious 1930's style semi-detached house has everything you would expect and more. Huge amounts of space, great modern features and is spacious in all the rooms throughout the house. The property features two separate reception rooms, a lovely sun room, large modern fitted kitchen, a separate study room, a bedroom and en-suite off of this all on the ground floor. The reception rooms leads out in to a lovely paved garden which has excellent views. Ascending the stairs we find three double sized bedrooms and lovely modern family bathroom. The property is rounded off by a drive for 2 cars and features double glazed windows throughout. The garden is a great space and entertaining would easily be accommodated for due to its size, layout and feel.

beresfordresidential.com

020 8696 7900

