



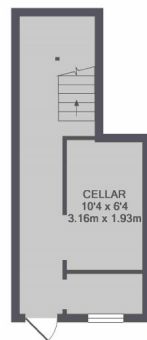
Kenilworth Road, W5

£1,350,000

An impressive family home on one of Ealing's prominent road offers five double bedrooms with an adaptable living space.

Located within half a mile of Ealing Broadway's shops and restaurants as well as Lammas Park and Ealing Common.

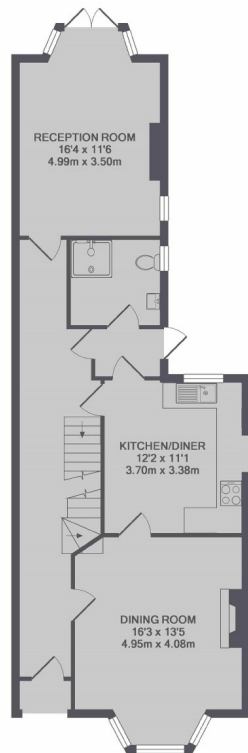
- Semi Detached • Five Bedrooms • Two Receptions •
- Eat In Kitchen • 60ft Garden Approx. • Large Cellar •



BASEMENT



2ND FLOOR



GROUND FLOOR



1ST FLOOR

TOTAL APPROX. FLOOR AREA 2224 SQ.FT. (206.6 SQ.M.)

Robertson Smith & Kempson Ealing Sales
1 The Broadway, London,
W5 2NT
020 8840 7677
ealingsales@robertsonsmithandkempson.co.uk

Energy Rating: E. We aim to make our particulars both accurate and reliable. However they are not guaranteed; nor do they form part of an offer or contract. If you require clarification on any points then please contact us, especially if you're traveling some distance to view. Please note that appliances and heating systems have not been tested and therefore no warranties can be given as to their good working order.