

SNELLERS

ESTATE AGENTS



Fairfield Avenue, TW2

£2,595 PCM

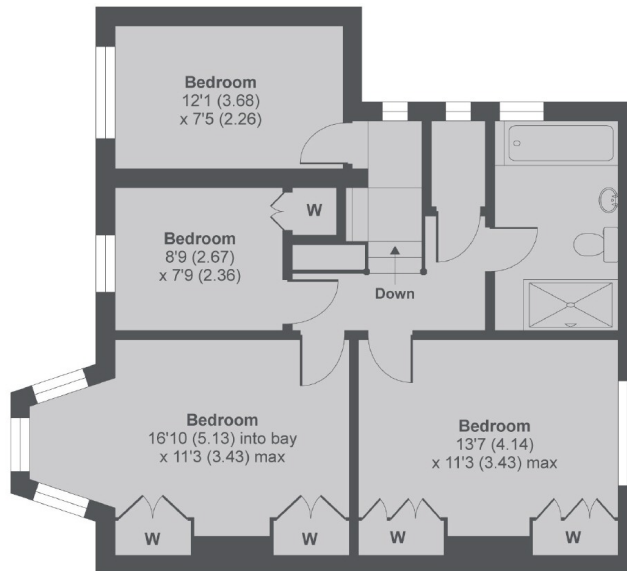
This contemporary four bedroom home is situated in the heart of Whitton. The house is positioned on a quiet street and has driveway and large private garden.

Fairfield Avenue is a sought-after residential road located off Whitton high street. Whitton station is 0.3 miles away with its four fast trains to London Waterloo.

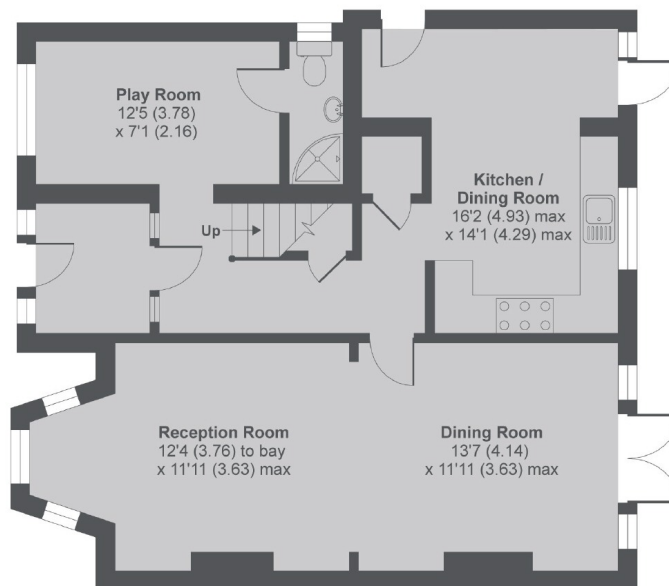
- Recently Refurbished • Semi Detached • Two Receptions •
- Two Bathrooms • Large Garden • Sought After Road •

SNELLERS

ESTATE AGENTS



1st Floor



Ground Floor

Fairfield Avenue, TW2

MAIN HOUSE APPROX FLOOR AREA 1505 SQ.FT 139.8 SQ.M

Copyright nichecom.co.uk 2017 Produced for Dexters REF : 190481

Snellers Twickenham Lettings
74 Heath Road
Twickenham
TW1 4BW
020 8892 5678
twickenhamlettings@snellers.co.uk

Energy Rating: E We aim to make our particulars both accurate and reliable. However they are not guaranteed; nor do they form part of an offer or contract. If you require clarification on any points then please contact us, especially if you're traveling some distance to view. Please note that appliances and heating systems have not been tested and therefore no warranties can be given as to their good working order