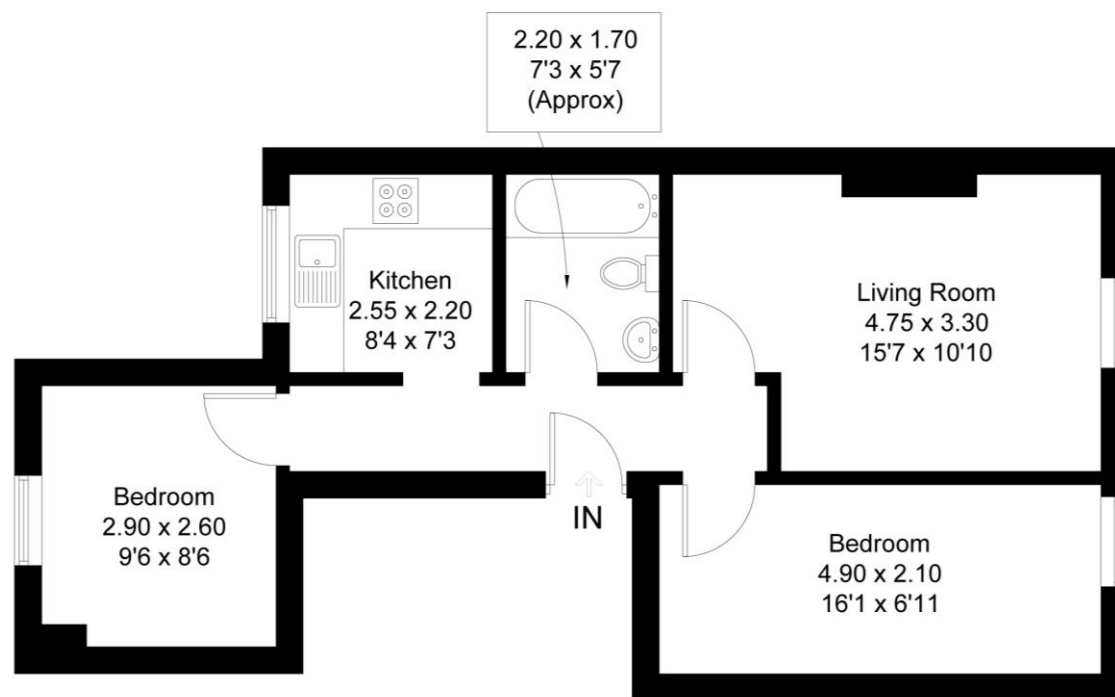






## Camberwell Road

Approximate Gross Internal Area = 48.5 sq m / 522 sq ft



Beresford Residential are delighted to present this fantastic two double bedroom flat, situated next to the increasingly popular Camberwell Green. There is a huge amount of redevelopment going into this area and as such this property provides the perfect investment opportunity. Approaching the building you ascend one flight of stairs to the front door of the flat itself. Initially you enter into a spacious corridor which has plenty of storage space. In the living area there's ample room for sofas, a coffee table, and a dining table and chairs. The flat offers some beautiful period features including high ceilings and sash windows which allow natural light to fill the space. Both bedrooms are good size doubles and are located on either side of the flat. Along the hallway you will find a large fully equipped kitchen with plenty of work surfaces, integrated appliances and a large amount of storage. Completing the property is the bright and fresh three piece bathroom. Early viewings are recommended in this strong sales market.

[beresfordresidential.com](http://beresfordresidential.com)

020 7358 7979

