



stags.co.uk

01823 256625 | taunton@stags.co.uk

85 Cheddon Fitzpaine
Taunton, TA2 8JU

A charming terraced cottage with gardens and parking situated in a wonderful location in need of improvement.

Taunton 3 miles. Monkton Heathfield 1.5 miles.

• Open plan kitchen/dining room • Sitting room • Ground floor bathroom • Three bedrooms • Enclosed rear garden • Off road parking • In need of modernisation •

Guide price £185,000

Cornwall | Devon | Somerset | Dorset | London

Situation

85 Cheddon Fitzpaine is situated in a highly favoured location on the Quantock Hills, within the conservation area of Cheddon Fitzpaine, close to the ancient Parish Church. Located close by is the village of Monkton Heathfield, which has a well respected secondary school, village store and public house. Being at the foot of the Quantock Hills, the area offers excellent opportunities for walking, riding and cycling with many miles of footpaths and bridleways close by. Taunton, the County Town of Somerset, is approximately 3 miles away and offers a comprehensive range of facilities including shops, recreational and scholastic facilities, as well as providing easy access to the M5 motorway and mainline railway station.

Description

85 Cheddon Fitzpaine is an attractive terraced cottage, retaining many period

features. The cottage has rendered elevations under a pitched tiled roof and has accommodation arranged over two floors.

Accommodation

A panelled front door opens through to an open plan kitchen/dining room. The kitchen area is fitted with a range of units, a single drainer sink with a mixer tap, rear aspect window, wall mounted gas fired boiler, a door to under stairs storage cupboard and door to rear lobby. The sitting room has a front aspect window, brick built open fireplace and a beamed ceiling. The rear lobby has a half glazed door to the rear garden and door to the bathroom, which is fitted with a suite comprising a panelled bath, enclosed tiled shower cubicle, pedestal wash basin, low level WC and a tiled floor. The first floor landing has doors off to all three bedrooms. The master bedroom has a



front aspect window with exposed wooden floor, and Victorian fireplace. Bedroom two has a front aspect window and a radiator. Bedroom three has a rear aspect window, radiator and a door to the airing cupboard.

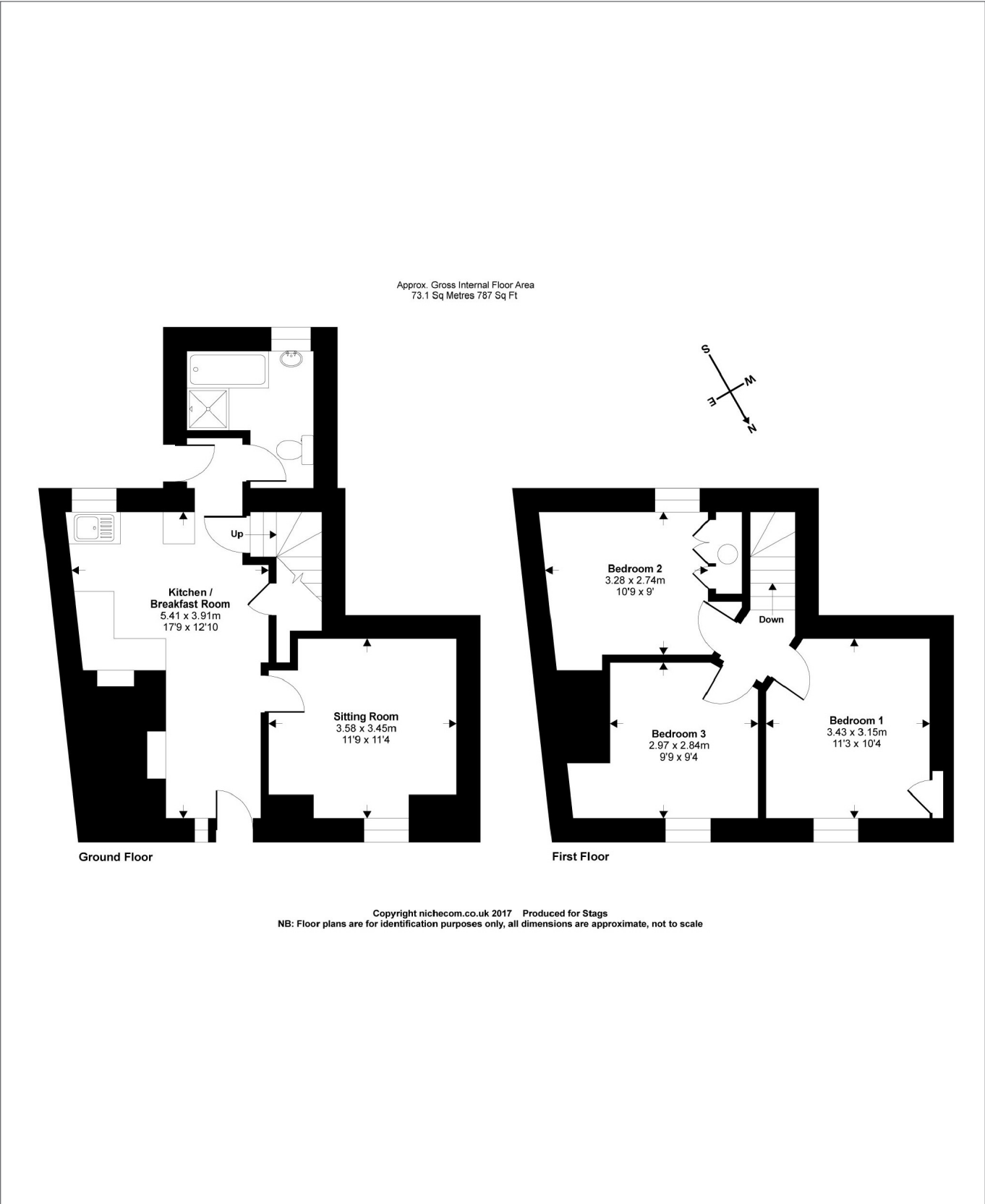
Outside

To the rear the garden has a deep paved patio area and an area of lawn surrounded by planted herbaceous borders. There are two greenhouses and an outside store. There is a gate which provides access to a parking area at the rear where it is understood that there is parking for two vehicles.

Directions

From Taunton take the A361 towards Monkton Heathfield. After leaving the outskirts of the town turn left signposted Cheddon Fitzpaine and continue into the village. Proceed towards the Church and number 85 can be identified on the left hand side.





5 Hammet Street, Taunton, Somerset, TA1 1RZ
Tel: 01823 256625
Email: taunton@stags.co.uk

